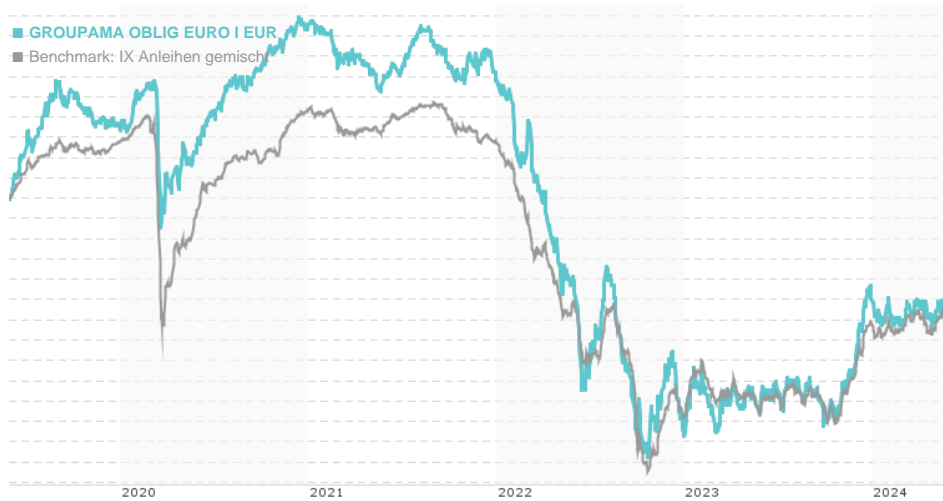


**GROUPAMA OBLIG EURO I EUR / FR0000991473 / GRP008 / Groupama AM**

| Last 05/28/2024 <sup>1</sup> | Region   | Branch       | Type of yield | Type              |
|------------------------------|----------|--------------|---------------|-------------------|
| 22474.89 EUR                 | Euroland | Bonds: Mixed | reinvestment  | Fixed-Income Fund |



**Risk key figures**

SRI 1 2 3 4 5 6 7

Mountain-View Funds Rating<sup>2</sup>

EDA<sup>3</sup>



**Yearly Performance**

|      |         |
|------|---------|
| 2023 | +7.65%  |
| 2022 | -16.57% |
| 2021 | -2.54%  |
| 2020 | +5.09%  |
| 2019 | +6.37%  |

| Master data         |                               | Conditions  |       | Other figures      |                |
|---------------------|-------------------------------|---|-------|--------------------|----------------|
| Fund type           | Single fund                   | Issue surcharge   | 2.75% | Minimum investment | EUR 150,000.00 |
| Category            | Bonds                         | Planned administr. fee  | 0.00% | Savings plan       | -              |
| Sub category        | Bonds: Mixed                  | Deposit fees  | 0.00% | UCITS / OGAW       | -              |
| Fund domicile       | France                        | Redemption charge   | 0.00% | Performance fee    | 0.00%          |
| Tranch volume       | (05/28/2024) EUR 6.90 mill.   | Ongoing charges   | -     | Redeployment fee   | 0.00%          |
| Total volume        | (05/28/2024) EUR 668.97 mill. | Dividends   |       | Investment company |                |
| Launch date         | 6/20/1997                     | Groupama AM   |       |                    |                |
| KESr report funds   | No                            | 25 rue de la Ville l'Evêque, 75008, Paris                             |       |                    |                |
| Business year start | 01.04.                        | France  |       |                    |                |
| Sustainability type | -                             | <a href="https://www.groupama-am.com">https://www.groupama-am.com</a> |       |                    |                |
| Fund manager        | Arthur CUZIN, Maya EL KHOURY  |   |       |                    |                |

| Performance      | 1M     | 6M     | YTD    | 1Y     | 2Y     | 3Y      | 5Y      | Since start |
|------------------|--------|--------|--------|--------|--------|---------|---------|-------------|
| Performance      | +0.20% | +3.00% | -0.65% | +4.56% | -1.78% | -10.83% | -5.34%  | +47.69%     |
| Performance p.a. | -      | -      | -      | +4.59% | -0.90% | -3.75%  | -1.09%  | +1.46%      |
| Sharpe ratio     | -0.22  | 0.51   | -1.22  | 0.17   | -0.77  | -1.36   | -0.99   | -0.76       |
| Volatility       | 5.03%  | 4.58%  | 4.42%  | 4.80%  | 6.09%  | 5.54%   | 4.94%   | 3.08%       |
| Worst month      | -      | -1.17% | -1.17% | -1.79% | -4.02% | -4.02%  | -4.43%  | -5.56%      |
| Best month       | -      | 3.08%  | 3.08%  | 3.08%  | 4.54%  | 4.54%   | 4.54%   | 4.54%       |
| Maximum loss     | -0.92% | -2.26% | -1.63% | -2.63% | -9.69% | -19.60% | -19.88% | -           |

<sup>1</sup> Important note on update status: The displayed date refers exclusively to the calculation of the NAV.

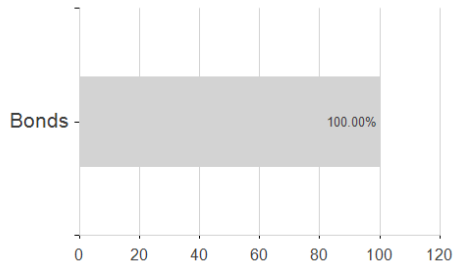
<sup>2</sup> The Mountain-View Data Fund Rating calculates a comparative ranking for funds using yield, volatility and trend data. For more information visit [MVD Funds Rating](#)

<sup>3</sup> Displays the Ethical-Dynamical Ratio calculated according to standard criteria. The maximum value is 100. For more information visit [EDA](#)

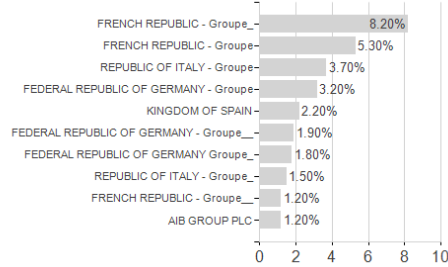
## GROUPAMA OBLIG EURO I EUR / FR0000991473 / GRP008 / Groupama AM

### Assessment Structure

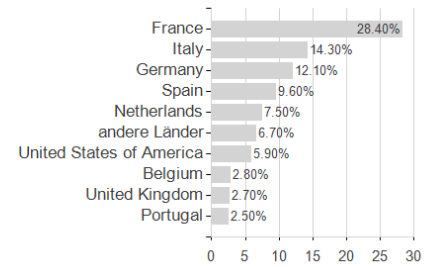
#### Assets



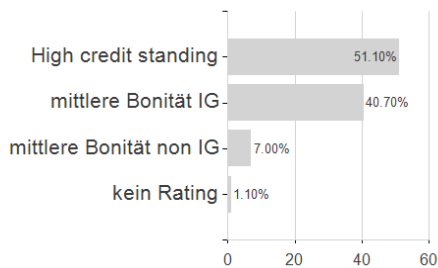
#### Largest positions



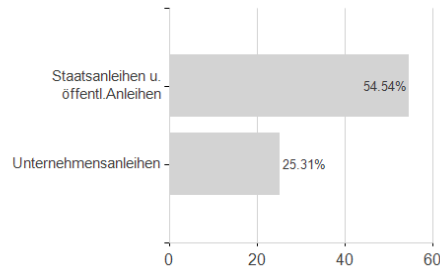
#### Countries



#### Rating



#### Issuer



#### Duration

