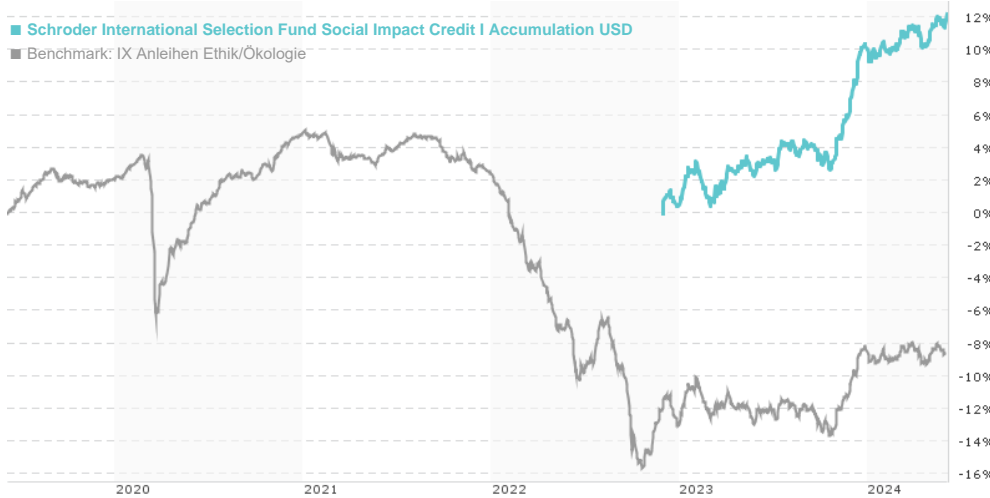


**Schroder International Selection Fund Social Impact Credit I Accumulation USD / LU2388134681 / A3C9Q4 / Schroder**

Last 06/04/2024 <sup>1</sup>	Region	Branch	Type of yield	Type
99.89 USD	Worldwide	Bonds: Focus Public Sector	reinvestment	Fixed-Income Fund

■ Schroder International Selection Fund Social Impact Credit I Accumulation USD  
■ Benchmark: IX Anleihen Ethik/Ökologie



**Risk key figures**

SRI 1 2 3 4 5 6 7

Mountain-View Funds Rating<sup>2</sup> EDA<sup>3</sup>

- -

**Yearly Performance**

2023 +9.80%

Master data		Conditions		Other figures	
Fund type	Single fund	Issue surcharge	0.00%	Minimum investment	USD 5,000,000.00
Category	Bonds	Planned administr. fee	0.00%	Savings plan	-
Sub category	Bonds: Focus Public Sector	Deposit fees	0.30%	UCITS / OGAW	Yes
Fund domicile	Luxembourg	Redemption charge	0.00%	Performance fee	0.00%
Tranch volume	(06/04/2024) USD 20.12 mill.	Ongoing charges	-	Redeployment fee	0.00%
Total volume	(06/04/2024) USD 20.44 mill.	Dividends		Investment company	
Launch date	11/9/2021	Schroder IM (EU)			
KESt report funds	Yes	5, rue Höhenhof, 1736, Senningerberg			
Business year start	01.01.	Luxembourg			
Sustainability type	Ethics/ecology	https://www.schroders.com			
Fund manager	Saida Eggerstedt				

Performance	1M	6M	YTD	1Y	2Y	3Y	5Y	Since start
Performance	+0.71%	+4.28%	+1.74%	+9.04%	-	-	-	+12.19%
Performance p.a.	-	-	-	+9.04%	-	-	-	+7.90%
Sharpe ratio	2.00	1.64	0.14	1.75	-	-	-	1.31
Volatility	2.78%	3.05%	2.78%	3.01%	0.00%	0.00%	0.00%	3.17%
Worst month	-	-0.93%	-0.93%	-0.93%	-1.67%	0.00%	0.00%	-1.67%
Best month	-	3.04%	3.04%	3.42%	3.42%	0.00%	0.00%	3.42%
Maximum loss	-0.61%	-1.26%	-1.26%	-1.76%	0.00%	0.00%	0.00%	-

**Distribution permission**

Austria, Germany, Switzerland, Luxembourg

<sup>1</sup> Important note on update status: The displayed date refers exclusively to the calculation of the NAV.

<sup>2</sup> The Mountain-View Data Fund Rating calculates a comparative ranking for funds using yield, volatility and trend data. For more information visit [MVD Funds Rating](#)

<sup>3</sup> Displays the Ethical-Dynamical Ratio calculated according to standard criteria. The maximum value is 100. For more information visit [EDA](#)

## Schroder International Selection Fund Social Impact Credit I Accumulation USD / LU2388134681 / A3C9Q4 / Schroder

### Investment strategy

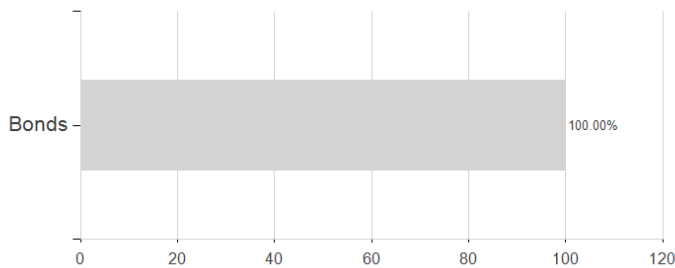
The fund is actively managed and invests its assets in (i) sustainable investments, which are investments that the investment manager expects to contribute positively towards social development themes.

### Investment goal

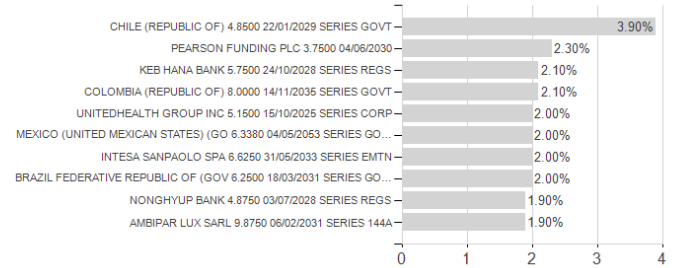
The fund aims to provide capital growth by investing in bonds issued by governments, government agencies, supra nationals and companies worldwide which help to advance social development and which the investment manager deems to be sustainable investments.

### Assessment Structure

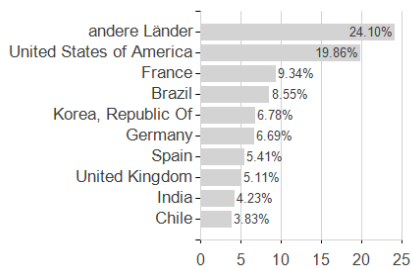
#### Assets



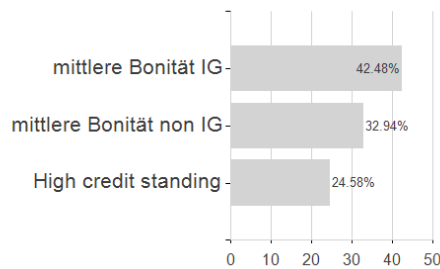
#### Largest positions



#### Countries



#### Rating



#### Branches

