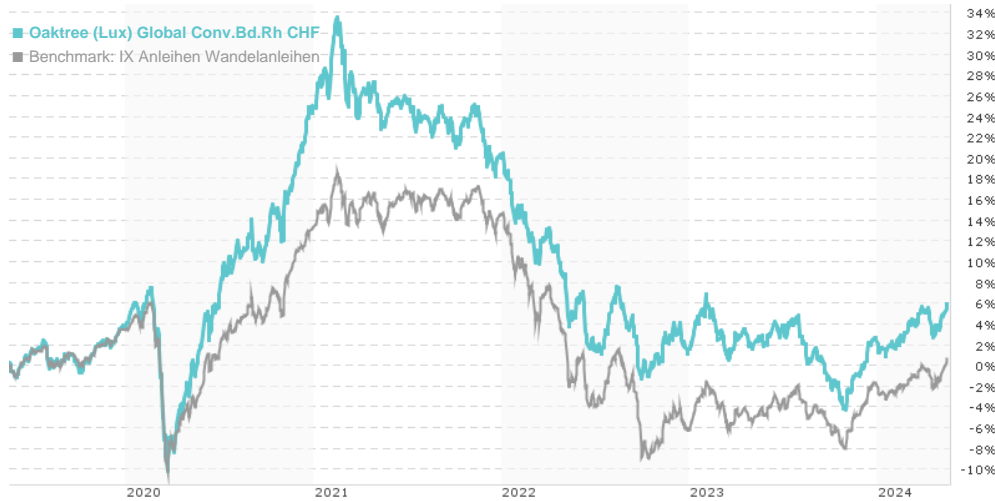


## Oaktree (Lux) Global Conv.Bd.Rh CHF / LU0854923223 / A1J867 / FundRock M. Co.

Last 05/16/2024 <sup>1</sup>	Region	Branch	Type of yield	Type
132.33 CHF	Worldwide	Convertible Bonds	reinvestment	Fixed-Income Fund



## Risk key figures

SRI 1 2 3 4 5 6 7

Mountain-View Funds Rating<sup>2</sup>EDA<sup>3</sup>

## Yearly Performance

2023	+0.91%
2022	-15.50%
2021	-3.79%
2020	+20.63%
2019	+7.10%

Master data		Conditions		Other figures	
Fund type	Single fund	Issue surcharge	2.00%	Minimum investment	UNT 0
Category	Bonds	Planned administr. fee	0.00%	Savings plan	-
Sub category	Convertible Bonds	Deposit fees	0.05%	UCITS / OGAW	Yes
Fund domicile	Luxembourg	Redemption charge	2.00%	Performance fee	0.00%
Tranch volume	(05/16/2024) USD 17.92 mill.	Ongoing charges	-	Redeployment fee	0.00%
Total volume	-	Dividends		Investment company	
Launch date	12/21/2012	FundRock M. Co.			
KESr report funds	Yes	33 Rue de Gasperich, L-5826, Hesperange			
Business year start	01.10.	Luxembourg			
Sustainability type	-	<a href="https://www.fundrock.com">https://www.fundrock.com</a>			
Fund manager	Jean-Pierre Latrille, Petar Raketic				

Performance	1M	6M	YTD	1Y	2Y	3Y	5Y	Since start
Performance	+2.53%	+7.31%	+3.36%	+3.51%	+1.50%	-14.10%	+5.23%	+2.79%
Performance p.a.	-	-	-	+3.50%	+0.75%	-4.94%	+1.02%	+0.28%
Sharpe ratio	5.71	2.33	1.08	-0.06	-0.48	-1.34	-0.37	-0.55
Volatility	5.57%	4.91%	5.09%	5.39%	6.38%	6.52%	7.56%	6.39%
Worst month	-	-2.22%	-2.22%	-3.38%	-5.25%	-5.25%	-8.98%	-8.98%
Best month	-	3.96%	3.03%	3.96%	3.96%	3.96%	6.50%	6.50%
Maximum loss	-0.63%	-2.90%	-2.90%	-8.74%	-11.06%	-24.04%	-28.34%	-

## Distribution permission

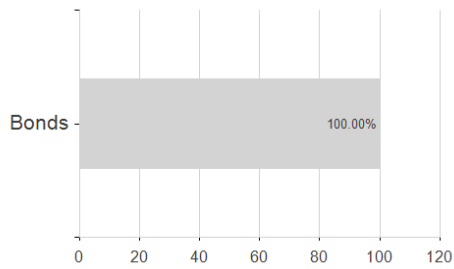
Austria, Germany, Switzerland, Luxembourg

<sup>1</sup> Important note on update status: The displayed date refers exclusively to the calculation of the NAV.<sup>2</sup> The Mountain-View Data Fund Rating calculates a comparative ranking for funds using yield, volatility and trend data. For more information visit [MVD Funds Rating](#)<sup>3</sup> Displays the Ethical-Dynamical Ratio calculated according to standard criteria. The maximum value is 100. For more information visit [EDA](#)

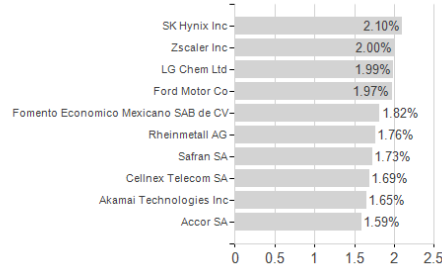
**Oaktree (Lux) Global Conv.Bd.Rh CHF / LU0854923223 / A1J867 / FundRock M. Co.**

**Assessment Structure**

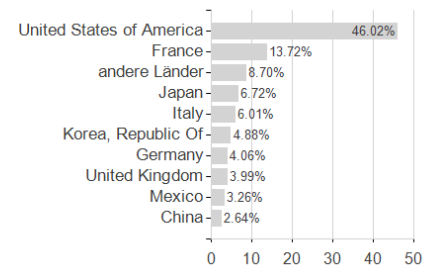
**Assets**



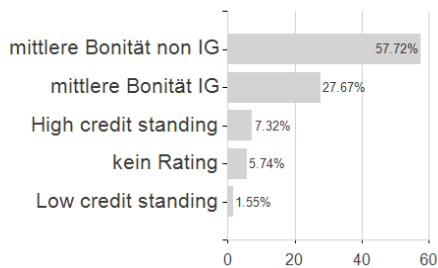
**Largest positions**



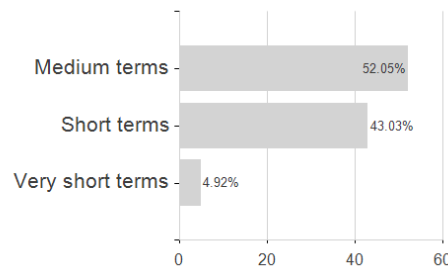
**Countries**



**Rating**



**Duration**



**Branches**

