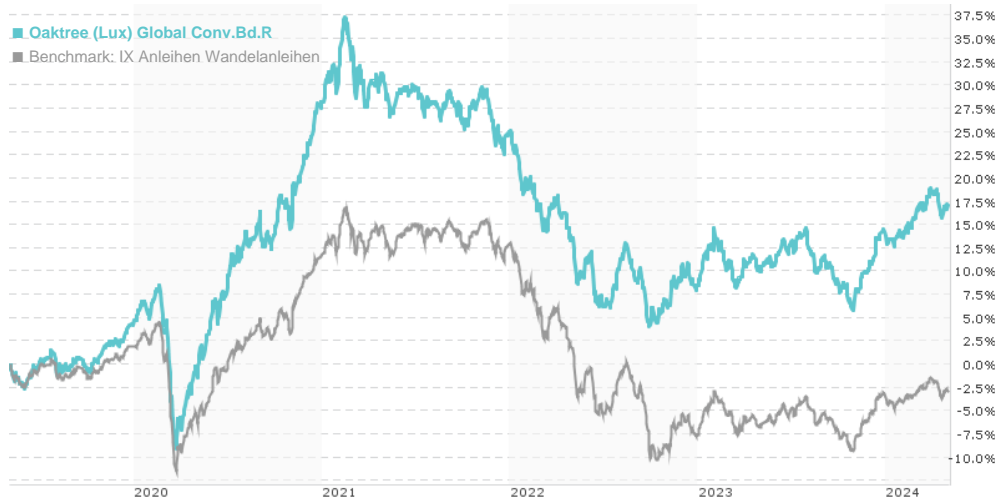


## Oaktree (Lux) Global Conv.Bd.R / LU0854923066 / A1J865 / FundRock M. Co.

Last 05/02/2024 <sup>1</sup>	Region	Branch	Type of yield	Type
168.30 USD	Worldwide	Convertible Bonds	reinvestment	Fixed-Income Fund



## Risk key figures

SRI 1 2 3 4 5 6 7

Mountain-View Funds Rating<sup>2</sup>EDA<sup>3</sup>

▲ ▲ ▲ ▲ ▲ ▲

## Yearly Performance

2023	+5.35%
2022	-13.09%
2021	-2.67%
2020	+23.09%
2019	+10.77%

Master data		Conditions		Other figures	
Fund type	Single fund	Issue surcharge	2.00%	Minimum investment	UNT 0
Category	Bonds	Planned administr. fee	0.00%	Savings plan	-
Sub category	Convertible Bonds	Deposit fees	0.05%	UCITS / OGAW	Yes
Fund domicile	Luxembourg	Redemption charge	2.00%	Performance fee	0.00%
Tranch volume	(05/02/2024) USD 24.84 mill.	Ongoing charges	-	Redeployment fee	0.00%
Total volume	-	Dividends		Investment company	
Launch date	12/20/2012	FundRock M. Co.			
KESr report funds	Yes	33 Rue de Gasperich, L-5826, Hesperange			
Business year start	01.10.	Luxembourg			
Sustainability type	-	<a href="https://www.fundrock.com">https://www.fundrock.com</a>			
Fund manager	Jean-Pierre Latrille, Petar Raketic				

Performance	1M	6M	YTD	1Y	2Y	3Y	5Y	Since start
Performance	-0.96%	+9.41%	+2.50%	+6.51%	+3.36%	-10.00%	+17.21%	+54.45%
Performance p.a.	-	-	-	+6.49%	+1.66%	-3.45%	+3.22%	+3.90%
Sharpe ratio	-2.65	3.03	0.76	0.50	-0.33	-1.11	-0.08	0.01
Volatility	5.62%	5.31%	5.13%	5.37%	6.60%	6.58%	7.58%	6.20%
Worst month	-	-1.93%	-1.93%	-3.03%	-4.93%	-4.93%	-8.64%	-8.64%
Best month	-	4.30%	3.52%	4.30%	4.30%	4.30%	6.63%	6.63%
Maximum loss	-2.64%	-2.72%	-2.72%	-7.72%	-8.37%	-20.01%	-24.14%	-

## Distribution permission

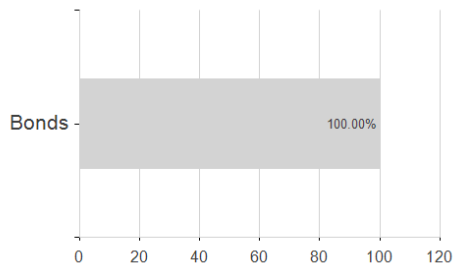
Austria, Germany, Switzerland, Luxembourg

<sup>1</sup> Important note on update status: The displayed date refers exclusively to the calculation of the NAV.<sup>2</sup> The Mountain-View Data Fund Rating calculates a comparative ranking for funds using yield, volatility and trend data. For more information visit [MVD Funds Rating](#)<sup>3</sup> Displays the Ethical-Dynamical Ratio calculated according to standard criteria. The maximum value is 100. For more information visit [EDA](#)

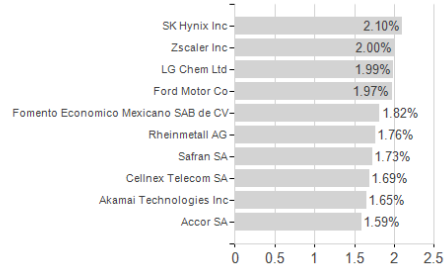
**Oaktree (Lux) Global Conv.Bd.R / LU0854923066 / A1J865 / FundRock M. Co.**

**Assessment Structure**

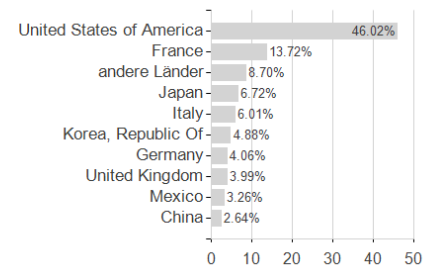
**Assets**



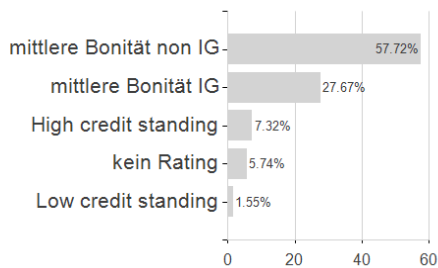
**Largest positions**



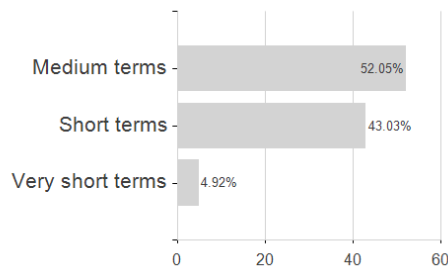
**Countries**



**Rating**



**Duration**



**Branches**

