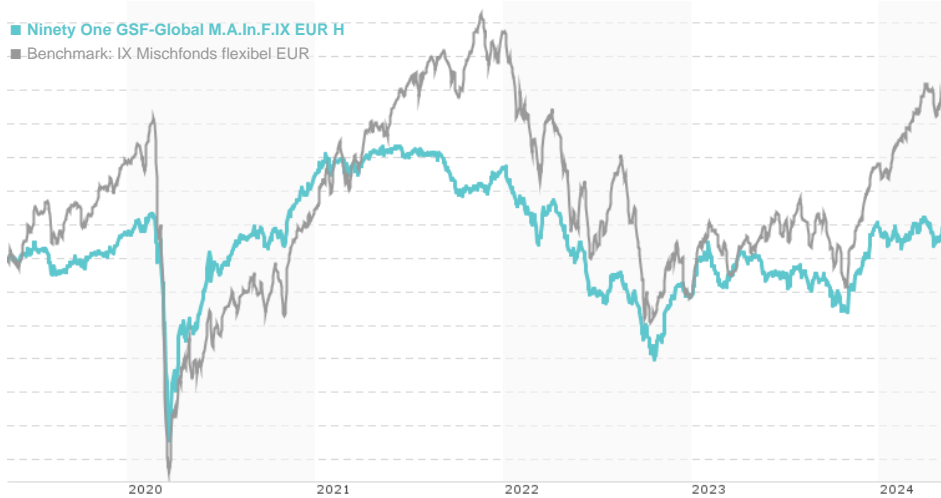


Ninety One GSF-Global M.A.In.F.IX EUR H / LU1554042132 / A2DK87 / Ninety One (LU)

Last 05/08/2024 ¹	Region	Branch	Type of yield	Type
21.47 EUR	Worldwide	Mixed fund/flexible	reinvestment	Mixed Fund

■ Ninety One GSF-Global M.A.In.F.IX EUR H
■ Benchmark: IX Mischfonds flexibel EUR



Risk key figures

SRI 1 2 3 4 5 6 7

Mountain-View Funds Rating²EDA³ 73

Yearly Performance

2023	+4.33%
2022	-7.22%
2021	+0.27%
2020	+3.56%
2019	+3.75%

Master data		Conditions		Other figures	
Fund type	Single fund	Issue surcharge	5.00%	Minimum investment	USD 1,000,000.00
Category	Mixed Fund	Planned administr. fee	0.00%	Savings plan	-
Sub category	Mixed fund/flexible	Deposit fees	0.05%	UCITS / OGAW	Yes
Fund domicile	Luxembourg	Redemption charge	0.00%	Performance fee	0.00%
Tranch volume	(05/08/2024) USD 6.74 mill.	Ongoing charges	-	Redeployment fee	0.00%
Total volume	(05/08/2024) USD 1,590.04 mill.	Dividends		Investment company	
Launch date	1/31/2017	Ninety One (LU)			
KESr report funds	No	2-4 Avenue Marie-Thérè, 2132, Luxembourg			
Business year start	01.01.	Luxembourg			
Sustainability type	-	ninetyone.com/			
Fund manager	John Stopford, Jason Borbora-Sheen				

Performance	1M	6M	YTD	1Y	2Y	3Y	5Y	Since start
Performance	+0.23%	+3.67%	+0.14%	+2.04%	+1.71%	-4.28%	+1.95%	+7.35%
Performance p.a.	-	-	-	+2.05%	+0.85%	-1.45%	+0.39%	+0.98%
Sharpe ratio	-0.24	1.07	-1.03	-0.48	-0.78	-1.49	-0.77	-0.73
Volatility	3.75%	3.51%	3.29%	3.61%	3.75%	3.52%	4.43%	3.87%
Worst month	-	-1.25%	-1.25%	-1.26%	-3.02%	-3.02%	-6.43%	-6.43%
Best month	-	2.90%	2.34%	2.90%	3.09%	3.09%	3.09%	3.09%
Maximum loss	-1.30%	-1.67%	-1.67%	-3.32%	-6.88%	-11.90%	-13.19%	-

Distribution permission

Austria, Germany, Switzerland, Luxembourg

¹ Important note on update status: The displayed date refers exclusively to the calculation of the NAV.

² The Mountain-View Data Fund Rating calculates a comparative ranking for funds using yield, volatility and trend data. For more information visit [MVD Funds Rating](#)

DISCLAIMER: The information on this page are for informational purposes only and should neither an offer to sell nor a solicitation for the purchase of the security or recommendation in favor of the security to be understood. baha GmbH assumes no liability despite thorough searches for the accuracy of the data.

Funds data from: [www.mountain-view.com](#). Fact Sheet created by: [www.baha.com](#)

Created: 05/12/2024

Ninety One GSF-Global M.A.In.F.IX EUR H / LU1554042132 / A2DK87 / Ninety One (LU)

3 Displays the Ethical-Dynamical Ratio calculated according to standard criteria. The maximum value is 100. For more information visit [EDA](#)

Investment strategy

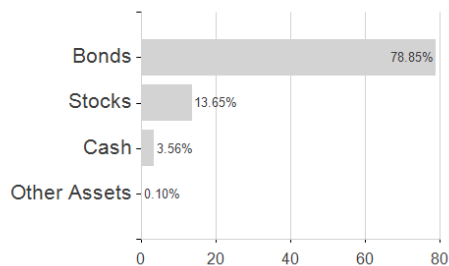
Seeks to limit volatility to be lower than 50% of the volatility of global equities. There is no guarantee that this will be achieved over the long-term or any period of time. Invests globally in a range of assets including: bonds, the shares of companies, alternative assets, derivatives, transferable securities and in other funds. The Fund may hold cash. Normally, exposure to shares of companies will be no more than 40% of the value of the Fund. Bonds may be issued by governments, institutions or companies, including from emerging and frontier markets. May invest up to 25% of its value in emerging and frontier markets and up to 20% of its value in mainland China, including bonds traded on the China Interbank Bond Market and companies traded on Stock Connect. The Investment Manager may at times utilise global equities (proxied by the MSCI All Country World Total Return Net Index) and bonds (proxied by the Bloomberg Barclays Global-Aggregate Total Return Index or representative components) to measure the risk and return characteristics of the Fund.

Investment goal

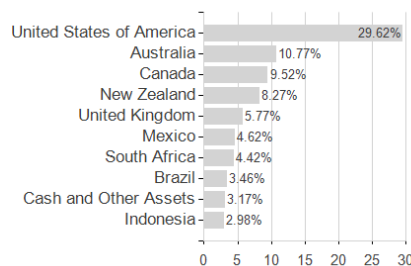
To provide income with the opportunity to grow the value of your investment over the long term.

Assessment Structure

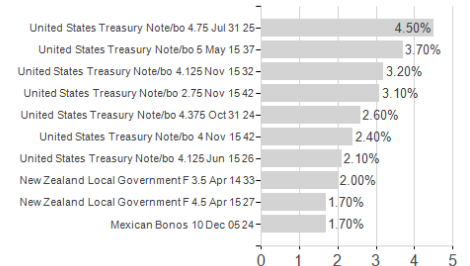
Assets



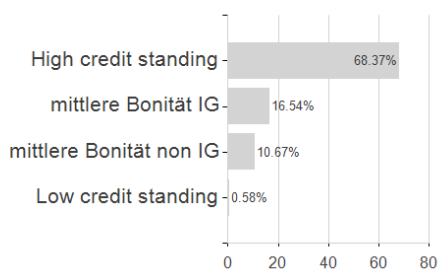
Countries



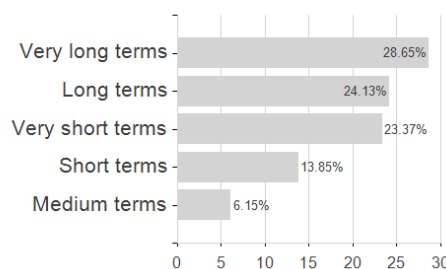
Largest positions



Rating



Duration



Currencies

