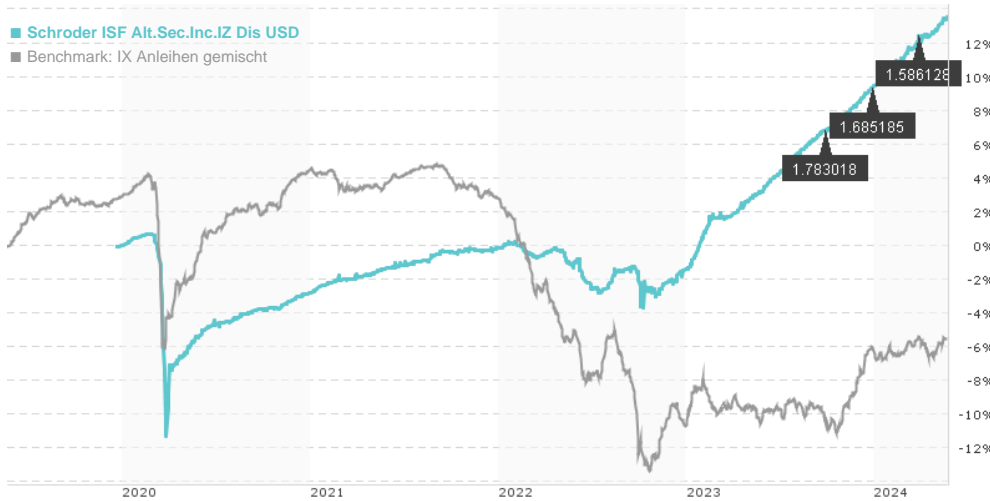


Schroder ISF Alt.Sec.Inc.IZ Dis USD / LU2084127369 / A2PXE4 / Schroder IM (EU)

Last 05/22/2024 ¹	Region	Branch	Type of yield	Type
95.15 USD	Worldwide	Bonds: Mixed	paying dividend	Fixed-Income Fund

■ Schroder ISF Alt.Sec.Inc.IZ Dis USD
■ Benchmark: IX Anleihen gemischt



Risk key figures

SRI 1 2 3 4 5 6 7

Mountain-View Funds Rating²EDA³

Yearly Performance

2023	+10.90%
2022	-1.26%
2021	+2.70%
2020	-2.78%

Master data		Conditions		Other figures	
Fund type	Single fund	Issue surcharge	0.00%	Minimum investment	USD 100,000,000.00
Category	Bonds	Planned administr. fee	0.00%	Savings plan	-
Sub category	Bonds: Mixed	Deposit fees	0.30%	UCITS / OGAW	Yes
Fund domicile	Luxembourg	Redemption charge	0.00%	Performance fee	0.00%
Tranch volume	(05/22/2024) USD 0.002 mill.	Ongoing charges	-	Redeployment fee	0.00%
Total volume	(05/22/2024) USD 840.73 mill.	Dividends		Investment company	
Launch date	12/17/2019	28.03.2024	1.59 USD	Schroder IM (EU) 5, rue Höhenhof, 1736, Senningerberg Luxembourg https://www.schroders.com	
KESr report funds	Yes	28.12.2023	1.69 USD		
Business year start	01.01.	28.09.2023	1.78 USD		
Sustainability type	-	15.06.2023	1.41 USD		
Fund manager	Michelle Russell-Dowe	23.03.2023	1.37 USD		

Performance	1M	6M	YTD	1Y	2Y	3Y	5Y	Since start
Performance	+0.86%	+4.90%	+3.81%	+10.05%	+14.70%	+15.08%	-	+13.56%
Performance p.a.	-	-	-	+10.02%	+7.10%	+4.80%	-	+2.92%
Sharpe ratio	6.36	4.35	4.03	5.25	1.33	0.47	-	-0.29
Volatility	1.12%	1.45%	1.57%	1.19%	2.47%	2.10%	0.00%	3.07%
Worst month	-	0.33%	0.33%	0.33%	-1.61%	-1.61%	-9.33%	-9.33%
Best month	-	1.22%	1.22%	1.22%	1.78%	1.78%	2.49%	2.49%
Maximum loss	-0.08%	-0.35%	-0.35%	-0.35%	-2.98%	-3.94%	0.00%	-

Distribution permission

Austria, Germany, Switzerland, Luxembourg

¹ Important note on update status: The displayed date refers exclusively to the calculation of the NAV.

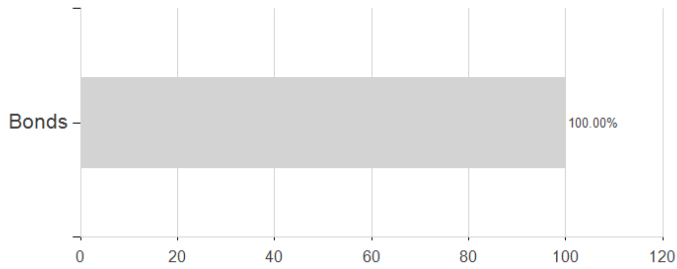
² The Mountain-View Data Fund Rating calculates a comparative ranking for funds using yield, volatility and trend data. For more information visit [MVD Funds Rating](#)

³ Displays the Ethical-Dynamical Ratio calculated according to standard criteria. The maximum value is 100. For more information visit [EDA](#)

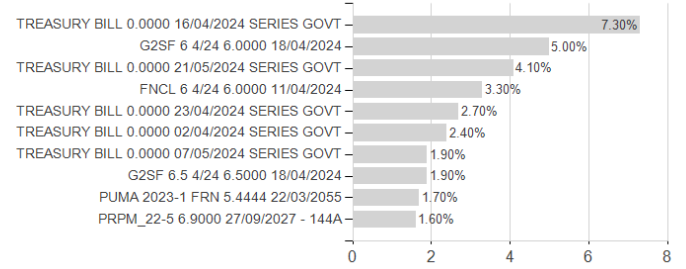
Schroder ISF Alt.Sec.Inc.IZ Dis USD / LU2084127369 / A2PXE4 / Schroder IM (EU)

Assessment Structure

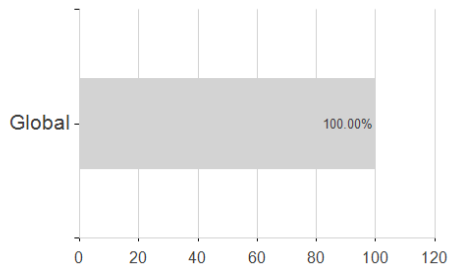
Assets



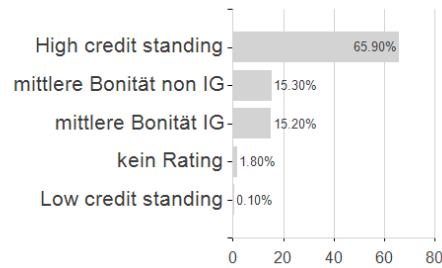
Largest positions



Countries



Rating



Issuer

