

**Schroder ISF Alt.Sec.Inc.A1 Dis GBP H / LU2114974590 / A2P10C / Schroder IM (EU)**

Last 04/24/2024 <sup>1</sup>	Region	Branch	Type of yield	Type
92.91 GBP	Worldwide	Bonds: Mixed	paying dividend	Fixed-Income Fund



**Risk key figures**

SRI 1 2 3 4 5 6 7

Mountain-View Funds Rating<sup>2</sup> EDA<sup>3</sup>

▲ ▲ ▲ ▲ ▲ ▲

**Yearly Performance**

2023	+9.03%
2022	-2.80%
2021	+1.33%

Master data		Conditions		Other figures	
Fund type	Single fund	Issue surcharge	3.00%	Minimum investment	USD 1,000.00
Category	Bonds	Planned administr. fee	0.00%	Savings plan	-
Sub category	Bonds: Mixed	Deposit fees	0.30%	UCITS / OGAW	Yes
Fund domicile	Luxembourg	Redemption charge	0.00%	Performance fee	0.00%
Tranch volume	(04/24/2024) USD 0.014 mill.	Ongoing charges	-	Redeployment fee	0.00%
Total volume	(04/24/2024) USD 776.84 mill.	Dividends		Investment company	
Launch date	3/19/2020	28.03.2024	1.57 GBP	Schroder IM (EU) 5, rue Höhenhof, 1736, Senningerberg Luxembourg <a href="https://www.schroders.com">https://www.schroders.com</a>	
KESr report funds	Yes	28.12.2023	1.63 GBP		
Business year start	01.01.	28.09.2023	1.86 GBP		
Sustainability type	-	15.06.2023	1.39 GBP		
Fund manager	Michelle Russell-Dowe	23.03.2023	1.36 GBP		

Performance	1M	6M	YTD	1Y	2Y	3Y	5Y	Since start
Performance	+0.38%	+4.06%	+2.53%	+8.31%	+9.14%	+9.40%	-	+10.16%
Performance p.a.	-	-	-	+8.29%	+4.47%	+3.04%	-	+2.39%
Sharpe ratio	0.44	3.00	2.70	3.83	0.24	-0.40	-	-0.49
Volatility	1.87%	1.47%	1.67%	1.16%	2.47%	2.09%	0.00%	3.05%
Worst month	-	0.07%	0.07%	0.07%	-1.73%	-1.73%	-1.73%	-1.73%
Best month	-	1.11%	1.11%	1.11%	1.57%	1.57%	2.33%	2.33%
Maximum loss	-0.38%	-0.38%	-0.38%	-0.38%	-4.13%	-4.88%	0.00%	-

**Distribution permission**

Austria, Germany, Switzerland

<sup>1</sup> Important note on update status: The displayed date refers exclusively to the calculation of the NAV.

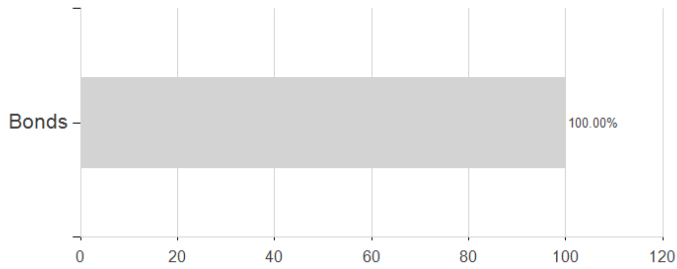
<sup>2</sup> The Mountain-View Data Fund Rating calculates a comparative ranking for funds using yield, volatility and trend data. For more information visit [MVD Funds Rating](#)

<sup>3</sup> Displays the Ethical-Dynamical Ratio calculated according to standard criteria. The maximum value is 100. For more information visit [EDA](#)

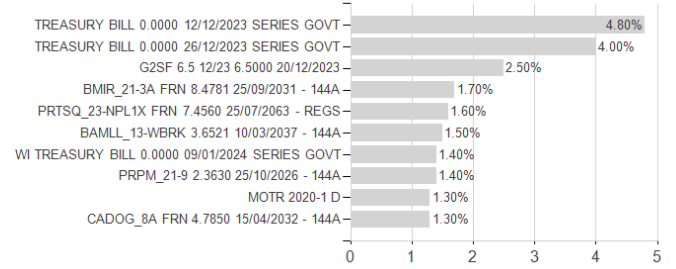
## Schroder ISF Alt.Sec.Inc.A1 Dis GBP H / LU2114974590 / A2P10C / Schroder IM (EU)

### Assessment Structure

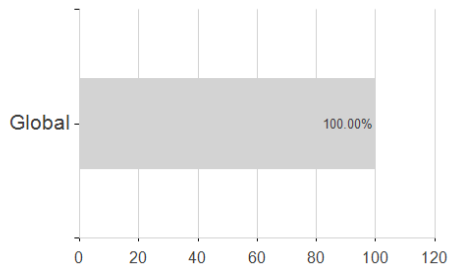
#### Assets



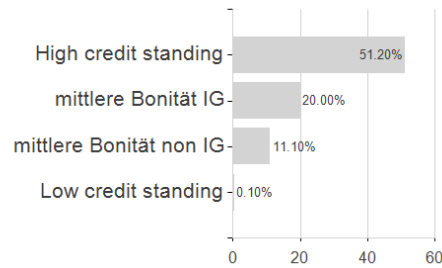
#### Largest positions



#### Countries



#### Rating



#### Issuer

