

**Raiffeisen-Global Rent R VTA / AT0000785340 / 078534 / Raiffeisen KAG**

Last 08/16/2019 <sup>1</sup> <b>113.08 EUR</b>	Region Worldwide	Branch Bonds: Mixed	Type of yield full reinvestment	Type Fixed-Income Fund
---	---------------------	------------------------	------------------------------------	---------------------------



**Risk key figures**

SRRI	1	2	3	<b>4</b>	5	6	7
FER fund risk	2.40						
Mountain-View Funds Rating	EDA <sup>2</sup>						
	74						

**Yearly Performance**

2018	+2.43%
2017	-5.86%
2016	+4.44%
2015	+6.63%
2014	+12.79%

Master data		Conditions		Other figures	
Fund type	Single fund	Issue surcharge	3.00%	Minimum investment	-
Category	Bonds	Planned administr. fee	-	Savings plan	Yes
Sub category	Bonds: Mixed	Deposit fees	-	UCITS / OGAW	Yes
Fund domicile	Austria	Redemption charge	-	Performance fee	-
Tranch volume	(08/16/2019) EUR 64,01 Mio.	Ongoing charges	(12/28/2018) 0.86%	Redeployment fee	-
Total volume	(08/16/2019) EUR 360,06 Mio.	<b>Dividends</b>		<b>Investment company</b>	
Launch date	5/26/1999	Raiffeisen KAG			
KEST report funds	Yes	Mooslackengasse 12, 1190, Wien			
Business year start	01.02.	Austria			
Sustainability type	-	https://www.rcm.at			
Fund manager	TEAM				

Performance	1M	6M	YTD	1Y	2Y	3Y	5Y	Since start
Performance	+3.64%	+7.84%	+10.15%	+10.06%	+11.43%	+4.71%	+24.11%	+128.91%
Performance p.a.	-	-	-	+10.06%	+5.56%	+1.55%	+4.42%	+4.18%
Sharpe ratio	10.07	3.94	4.15	2.54	1.41	0.45	0.90	0.85
Volatility	5.24%	4.32%	4.17%	4.13%	4.24%	4.33%	5.34%	5.40%
Worst month	-	-0.26%	-0.26%	-0.73%	-2.10%	-2.10%	-2.56%	-3.41%
Best month	-	2.83%	2.83%	2.83%	3.23%	3.23%	6.90%	6.90%
Maximum loss	-0.39%	-1.37%	-1.37%	-3.67%	-4.76%	-10.03%	-10.97%	-
Outperformance	-	-	4.82%	+5.49%	+8.31%	+1.65%	+16.11%	-

<sup>1</sup> Important note on update status: The displayed date refers exclusively to the calculation of the NAV.

<sup>2</sup> Displays the Ethical-Dynamical Ratio calculated according to standard criteria. The maximum value is 100. For more information visit <http://www.mountain-view.com/FER-Fonds-Rating.pdf>

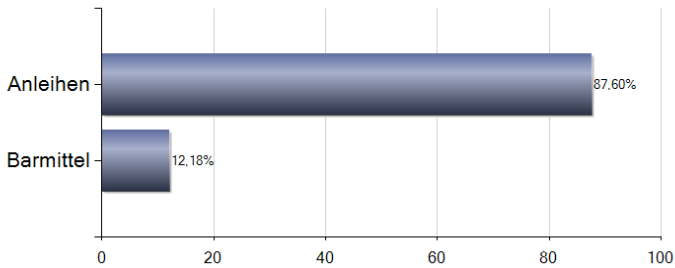
**Raiffeisen-Global Rent R VTA / AT0000785340 / 078534 / Raiffeisen KAG**

**Investment goal**

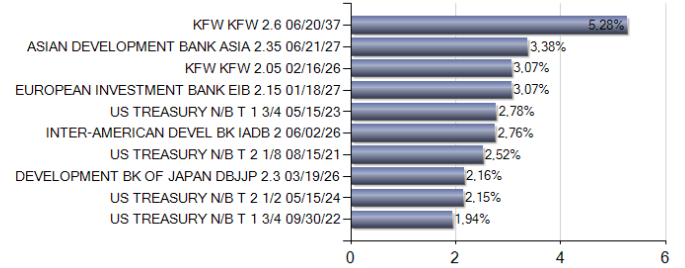
Raiffeisen-Global-Bonds invests mainly in bonds from North American, European or Asian issuers. The fund is actively managed, with the entire maturity curve taken into consideration. As Raiffeisen-Global-Bonds invests mainly in bonds, the value of the units can be affected especially by interest rate and exchange rate fluctuations. This fund is particularly suitable for investors who wish to take advantage of bond diversification as an alternative to a direct investment.

**Assessment Structure**

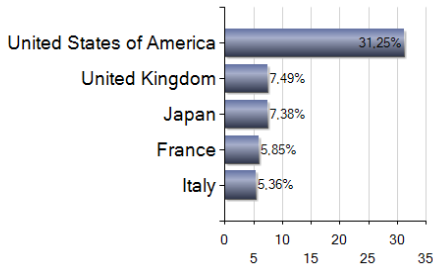
**Assets**



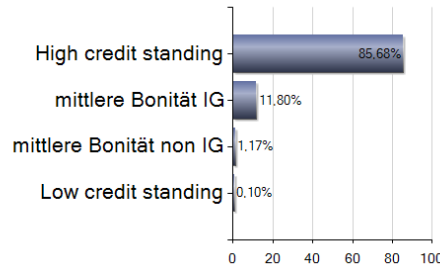
**Largest positions**



**Countries**



**Rating**



**Currencies**

