

Key investor information

This document provides you with key investor information about this fund. It is not marketing material. The information is required by law to help you understand the nature and the risks of investing in this fund. You are advised to read it so you can make an informed decision about whether to invest.



DWS Vorsorge AS (Flex)

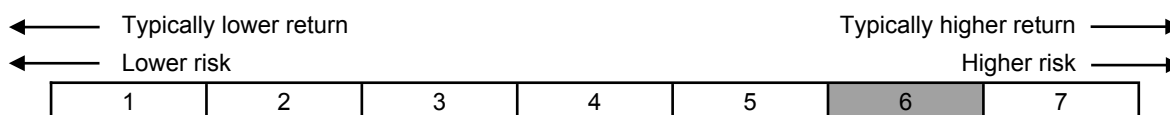
Security code: 976989 ISIN: DE0009769893

Management Company: DWS Investment GmbH, a member of the Deutsche Bank Group.

Objectives and investment policy

The objective of the investment policy is to maintain value and ensure long-term growth. In order to achieve this, the fund pursues a substance-oriented investment policy. The fund invests in interest-bearing securities, equities, funds, certificates, money market instruments and derivatives. A maximum of 21% of the net assets must be invested in equities. Real estate funds may be included up to 10%. Derivative financial instruments may only be used for hedging purposes. The selection of individual investments is at the discretion of the fund management. The fund is subject to various risks. A more detailed description of risks can be found under 'Risks' in the sales prospectus. The currency of DWS Vorsorge AS (Flex) is EUR. Returns and gains are not distributed but are reinvested in the fund. You may request the redemption of shares on each valuation day. The redemption may only be suspended in exceptional cases taking into account your interests as an investor.

Risk and reward profile



The calculation of the risk and reward profile is based on historical data that cannot be used as a reliable indicator for the future risk profile. This risk indicator is subject to changes; the classification of the fund may change over time and cannot be guaranteed. Even a fund that is classified in the lowest category (category 1) does not represent a completely risk-free investment. The fund is classified in category 6 because its share price may fluctuate strongly and the likelihood of both losses and gains may therefore be high.

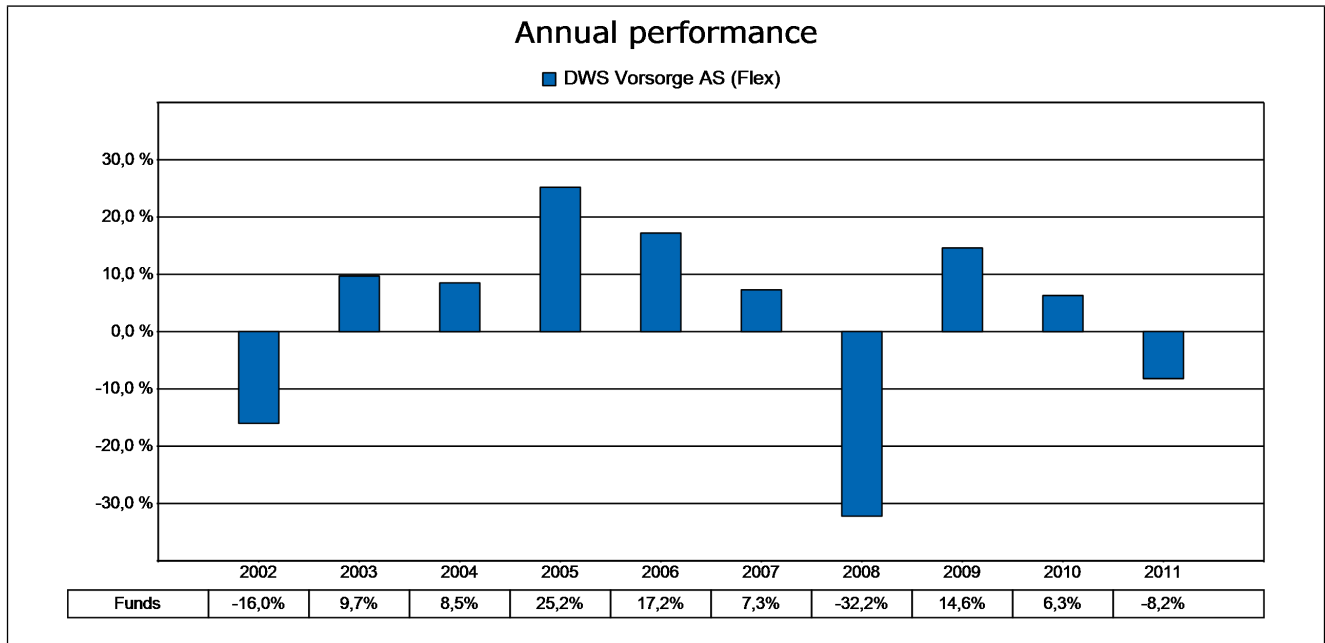
Charges

The costs and fees borne by you are used for the management, administration and custody of the fund, as well as for its distribution and marketing. These costs restrict the potential growth of your investment.

One-off charges taken before or after you invest	
Entry charge	4,00 %. This is the maximum amount that will be deducted from your investment prior to investment.
Exit charge	No redemption fee
Charges taken from the fund over a year	
Ongoing charge	0,89 %
Charges taken from the fund under certain specific conditions	
Performance fee	None
Fees from securities lending	0,06 %

The front-end load specified here is a maximum amount. It may be lower in individual cases. To find out the amount that is currently applicable for you, please request it from the office responsible for you or from your financial advisor. The current costs specified here were incurred in the fiscal year of the fund, which ended on 30.09.2011. They may change from year to year. The current costs do not include the performance-based fee and the transaction costs. Additional information on costs can be found under "Costs" in the sales prospectus.

Past performance



Past performance is not a reliable indicator of future performance. All costs and fees that were withdrawn from DWS Vorsorge AS (Flex) were deducted during the calculation. Initial sales charges and redemption fees were not taken into account. DWS Vorsorge AS (Flex) was launched in 1998. The performance was calculated in EUR.

Practical information

The custodian is State Street Bank GmbH, Germany. The sales prospectus, annual report and semiannual report are available in the language of this document or in German from DWS Investment GmbH and may be requested free of charge. The current share prices as well as additional information about the fund are available in the language of this document or in German in the "Download" section of the fund on your local DWS Investments website or at www.dws.com. The fund is subject to German tax law. This may affect how you are taxed on your income from the fund. DWS Investment GmbH may be held liable solely on the basis of any statement contained in this document that is misleading, inaccurate or inconsistent with the relevant parts of the sales prospectus. This fund is authorised in Germany and regulated by the German Federal Financial Supervisory Authority (Bundesanstalt für Finanzdienstleistungsaufsicht).

This key investor information is accurate as at 17.02.2012.